

GENERAL INFORMATION		
ADMISSION FEES		
	General	Groups*
Age 16 and older	¥1,000	¥800
Age 15 and under	Free	Free
*Groups of 20 or more paying people		
● Groups are required to book in advance		
● Wonder Museum offers free admission for all visitors.		
SPECIAL DISCOUNT		
	General	Groups*
Student	¥500	¥400
● Valid student ID is required.		
ANNUAL PASS		
Age 16 and older	¥4,000	
Student	(Valid student ID is required) ¥2,000	
● An annual pass can only be used by the purchaser.		
● Valid for one year from the date of issue		

Official Social Media Accounts

Official Facebook (in English and Chinese)



You can contact us both in English and Chinese via Facebook Messenger!

Official Instagram (in Japanese)



Official YouTube channel (in Japanese)



Online Shop

Official online shop (in Japanese)



GENERAL INFORMATION

OPENING HOURS

OPEN

Last admission

CLOSE

Weekdays

9:30 a.m. ▶ 4:30 p.m ▶ 5:30 p.m.

Weekends & holidays 9:30 a.m. ▶ 8:00 p.m ▶ 9:00 p.m.

- Wonder Museum will be closed 30 min prior to the zoo closing.
- Some animals will go back to off-exhibit areas before the zoo closing.

REGULAR CLOSING DAY

Tuesdays & December 30th, 31st, January 1st

- We are open on Tuesdays if it is a public holiday according to the Japanese calendar. In this case, we will be closed the following weekday.

ACCESS & DIRECTIONS

by CAR

- 50 min from Naha Airport by local roads
- 20 min from Naha I.C. to Okinawa-minami I.C. by Okinawa Expressway; 10 min from Okinawa-minami I.C.

by BUS

- 1 hour from Naha bus terminal to Nakanomachi bus stop (bus No.23, 27, 31 and more); 15-min walk from Nakanomachi bus stop

The map illustrates the route from Naha Airport to the Okinawa Zoo & Museum. It shows the Okinawa Expressway (Route 230) and the Okinawa-minami I.C. as the starting point for the car route. The bus route is shown as a dashed line from the Nakanomachi bus stop to the zoo. Key landmarks include Goya South, Goya Crossroads, Okinawa City Hall, Family Mart, Shimabukuro, and AEON MALL Okinawa Ryeom. The map also indicates directions to Chalan and Takahara.

Okinawa Zoo & Museum Foundation

5-7-1, Goya, Okinawa City, Okinawa 904-0021, Japan

tel : 098-933-4190

fax : 098-932-1634

mail : info@okzm.jp



Official website

【第1種動物取扱業の種別】展示・販売・保管・貸出
【登録番号】 沖動展第322号・沖動販第322号・沖動貸第322号・沖動保第322号
【登録年月日】 平成19年4月24日【有効期間の末日】 令和9年4月23日【動物取扱責任者】 吉見裕子



ENGLISH



July 2024

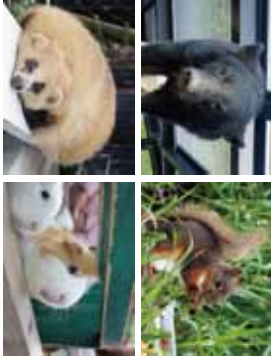
RULES IN THE ZOO	
1	Please do not feed the animals Feeding is prohibited including native animals, such as pigeons. NOTE: You may feed the animals feed purchased from the zoo at the exhibit.
2	Please do not shine a flashlight on animals Animals may be stressed by a bright light.
3	Use a gentle voice around the animals Animals will be startled and stressed by a loud voice.
4	Keep your hands away from the fence Never cross any fence or barrier in the zoo. If you drop your belongings inside the fence, please contact a zoo staff member.
5	Do not tap the glass Thank you very much for being kind to our animals.

SPECIAL EXPERIENCES	
Please check our website for more information and special NIGHT ZOO experiences. Programs are subject to change depending on weather and animals' health conditions.	
KWACCHI TIME Animal feeding time * "kwacchi" means "a feast" in the Okinawan dialect.	
10:30 a.m.	Hippopotamus
11:00 a.m.	Yakushima Macaque
3:00 p.m.	Malayan Sun Bear
3:00 p.m.	Japan Black Bear
3:00 p.m.	Shima Hiya Goat
4:00 p.m.	Orli's Flying Fox
ANIMAL PLAZA Workshop fee Opening hours	
¥200 ~	
• Please check our website for other animals' "Kwacchi Time" information.	
HAND FEEDING Fee Reception hours	
¥200	10:00 a.m. - 11:30 a.m.
¥200	1:30 p.m. - 4:00 p.m.
¥200	12:00 p.m. - 2:00 p.m.
Shima Hiya Goat (at horse park) Shima Hiya Goat (at Saiyama Labrynth) Sheep, Capybara, Goat	
• Food for feeding is in limited supply. • Please check our website for other animals' hand feeding information.	
PONY RIDES Fee Reception hours	
¥500 ~	Weekends & holidays 4:00 p.m. - 4:30 p.m.
Pony ride is available at Horse Park.	

DINING OPTIONS	
RESTAURANT "UMIZOKU KOUBOU" Closed Tuesdays	
Buffet-style lunch 11:00 a.m. - 3:00 p.m.	
• You need to exit the zoo from Main Gate in order to access "Umizoku Koubou." You may re-enter the zoo by getting your ticket stamped by restaurant staff.	
PARLOR "WELCOME"	
Weekdays 10:30 a.m. - 4:30 p.m.	Weekends & holidays 10:30 a.m. - 8:30 p.m.
WONDER MUSEUM	
Wonder Museum offers free admission for all visitors.	
OPENING HOURS	
Weekdays 9:30 a.m. - 5:00 p.m.	Weekends & holidays 9:30 a.m. - 8:30 p.m.
ACTIVITIES	
• These rides are available at Ride Park.	
RIDES Fee Reception hours	
¥200	Weekdays 9:45 a.m. - 4:45 p.m.
¥200	Weekends & holidays 9:45 a.m. - 8:15 p.m.
Carousel Train (These rides will continue for 15 min after the reception closes.)	
¥100	Weekdays 9:45 a.m. - 5:00 p.m.
¥100	Weekends & holidays 9:45 a.m. - 8:30 p.m.
Go-cart (Fishing must end 30 min after the reception closes.)	
FISHING Fee Reception hours	
¥300	Weekends & holidays 10:00 a.m. - 4:30 p.m.
• You may not use your own tools. Rental tools are available at the reception.	



We are located in Ryukyu Archipelago and there are so many unique animals and plants which you can only see in this area. You can take a close look at local Ryukyu livestock animals and Ryukyu wild animals:
"Yakushima macaque," "crested serpent eagle," and more!



You can encounter the animals which are popular in old Japanese tales and picture books. In Animal Plaza, you can study how we can build a good relationship with animals (workshop reservation is required).



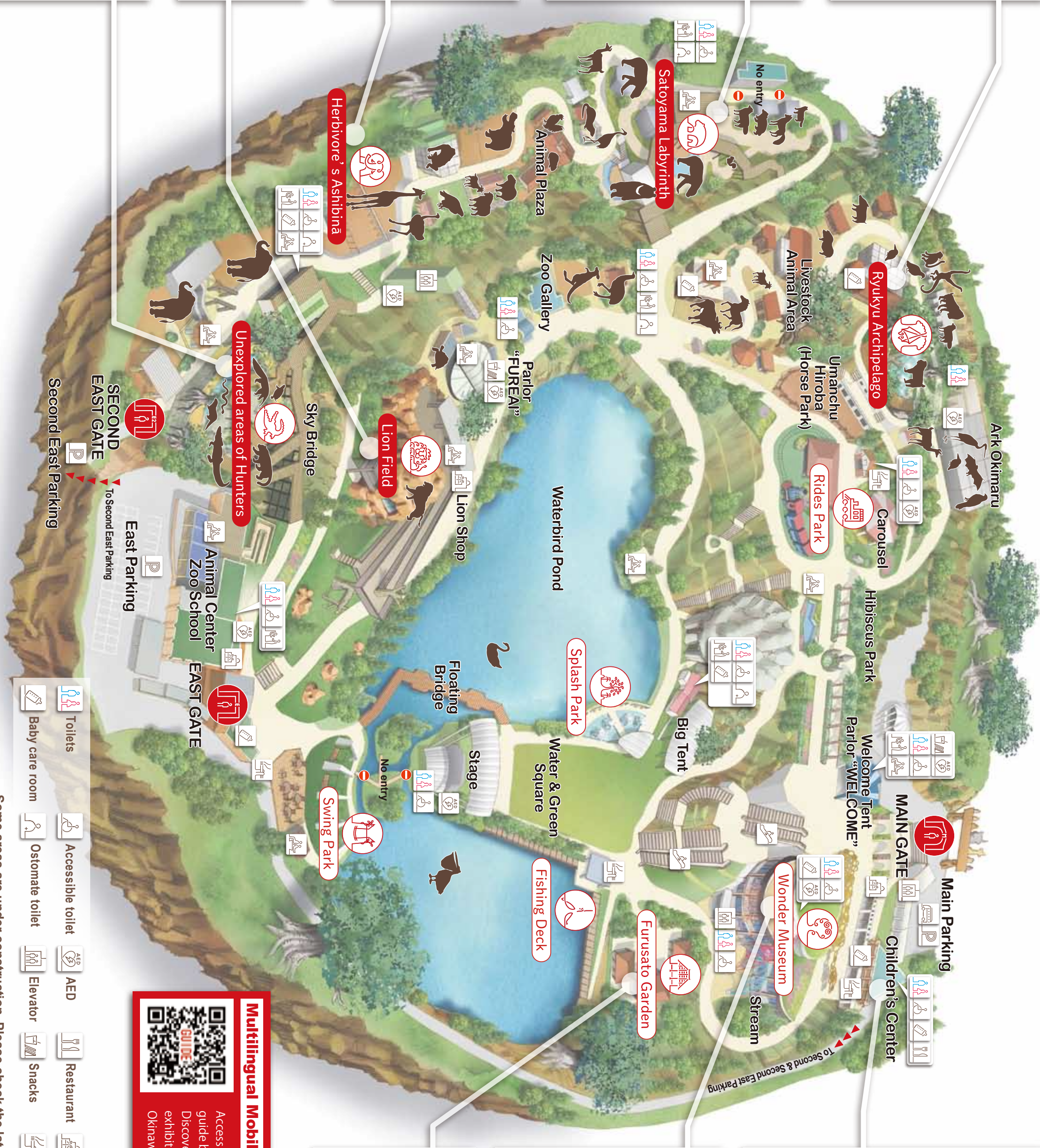
"Ashibinaa" means "playground" or "a place to have an exchange meeting" in Okinawan dialect. You can meet large herbivores, such as Indian elephants, reticulated giraffes, and hippopotamuses, in their "Ashibinaa"!



There are two rocky lion exhibits! You can observe lions from different angles up and down.



We exhibit various reptiles, jaguars, giant anteaters, small-clawed otters and more! These animals live in tropical climate zone.



CHILDREN'S CENTER

This is an admission-free area. We have picture book library, the restaurant "Umizoku Koubou" (which you can enjoy Okinawan cuisine), and Regional Environmental Education Center of the Okinawa Prefecture. The administration office is also on the B1 floor.



WONDER MUSEUM

You can touch, play and learn! There are so many fun hands-on exhibits and workshops which will spark your sense of wonder.



FURUSATO GARDEN

You can see the old historical houses built in Okinawan style. This is National Registered Tangible Cultural property.



Multilingual Mobile Guide Available!

Access our mobile audiovisual guide by scanning this QR code. Discover information about exhibits and animals at the Okinawa Zoo and Museum!

- | | | | | | |
|--|--|--|--|--|--|
| | | | | | |
| | | | | | |

Some areas are under construction. Please check the latest information at our website.